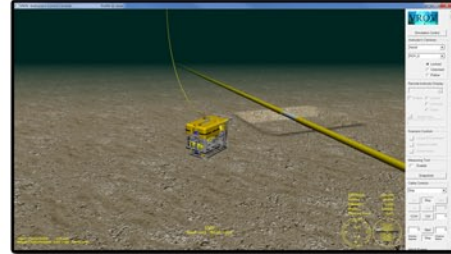
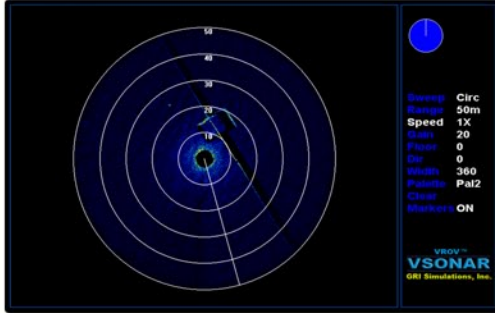


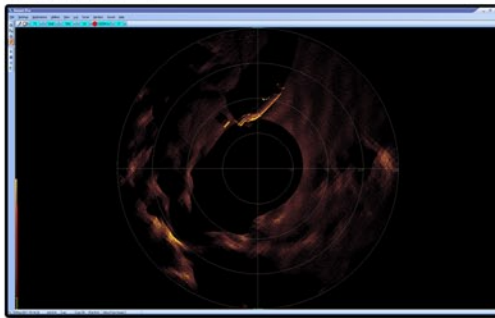
VROV creates simulated sonar data that can be processed, controlled, and displayed by the VSONar module or OEM topsides such as Trittech, MS 1000, or BlueView.

## VSONAR



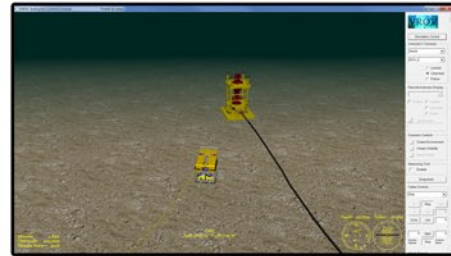
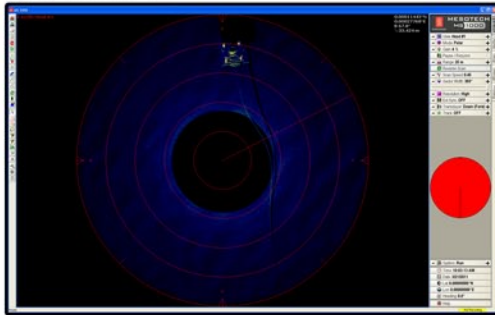
Locating the damaged section of a pipeline that is to be repaired.

## TRITECH



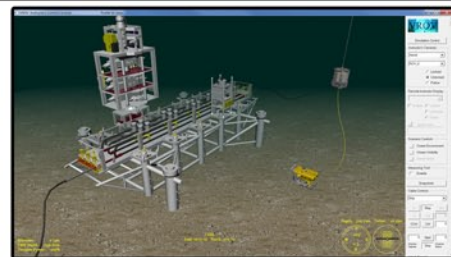
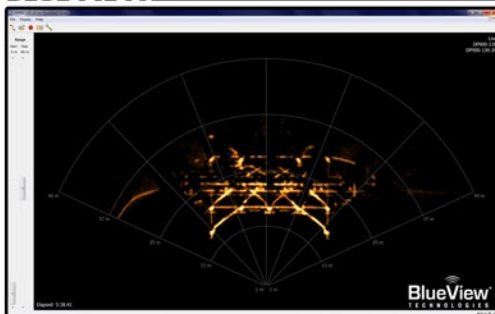
Approaching a trapped submarine in order to remove the cable disabling it.

## MS 1000



Following a pipeline along the seabed to a piece of equipment in an oil field.

## BLUEVIEW



Performing a routine inspection of various oil field equipment.